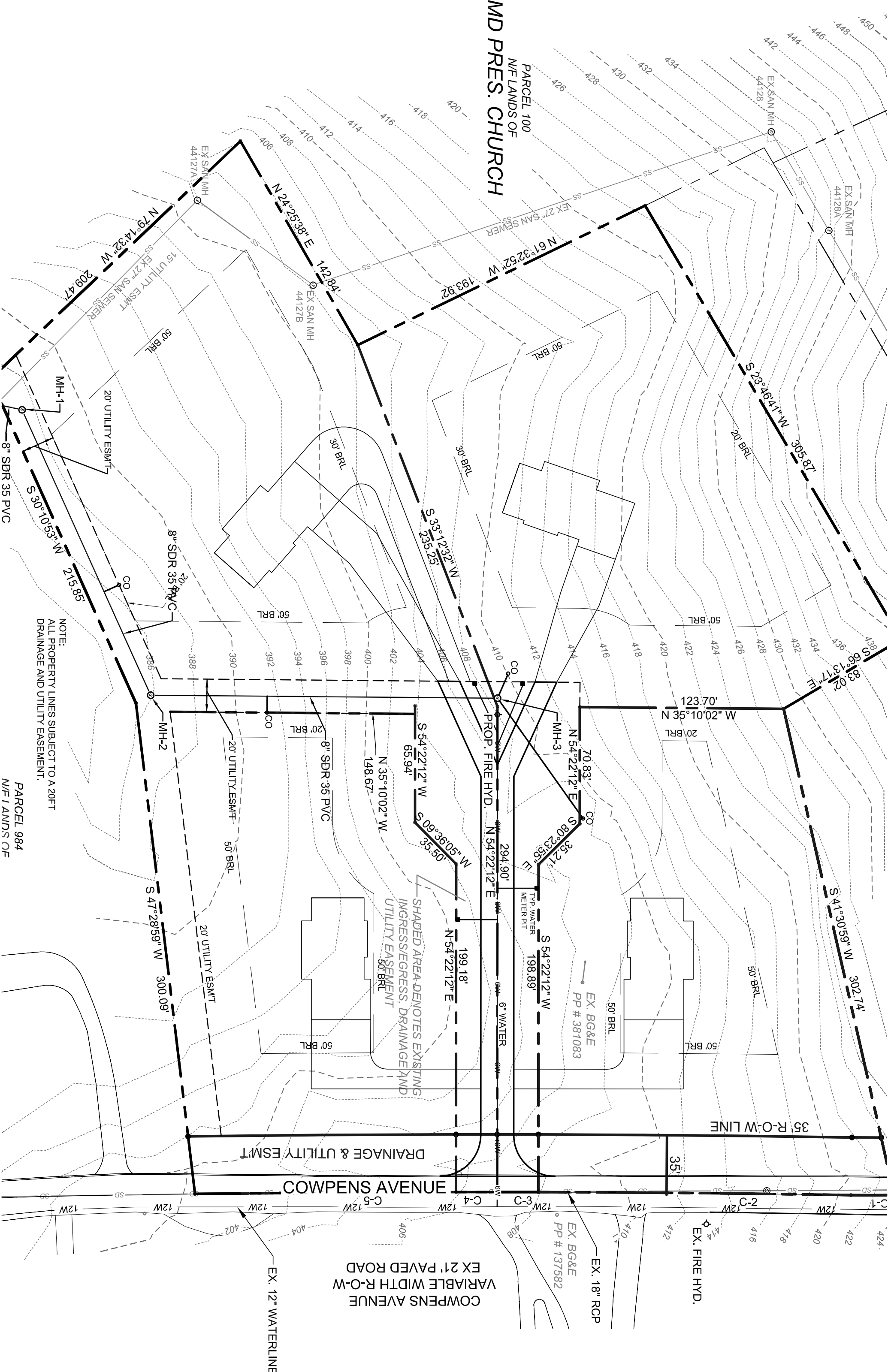


MD PRES. CHURCH

PARCEL 100
N/E LANDS OF



NOTE:
ALL PROPERTY LINES SUBJECT TO A 20FT
DRAINAGE AND UTILITY EASEMENT.

PARCEL 984
N/E LANDS OF

COWPENS AVENUE
VARIABLE WIDTH R-O-W
EX 21' PAVED ROAD

EX. 12" WATERLINE

EX. 18" RCP

EX. FIRE HYD.

EX. BG&E
PP # 137582

COWPENS AVENUE

DRAINAGE & UTILITY ESM'T

35' R-O-W LINE

SHADED AREA DENOTES EXISTING
INGRESS/EGRESS, DRAINAGE AND
UTILITY EASEMENT

EX. BG&E
PP # 381083

TYP. WATER
METER PIT

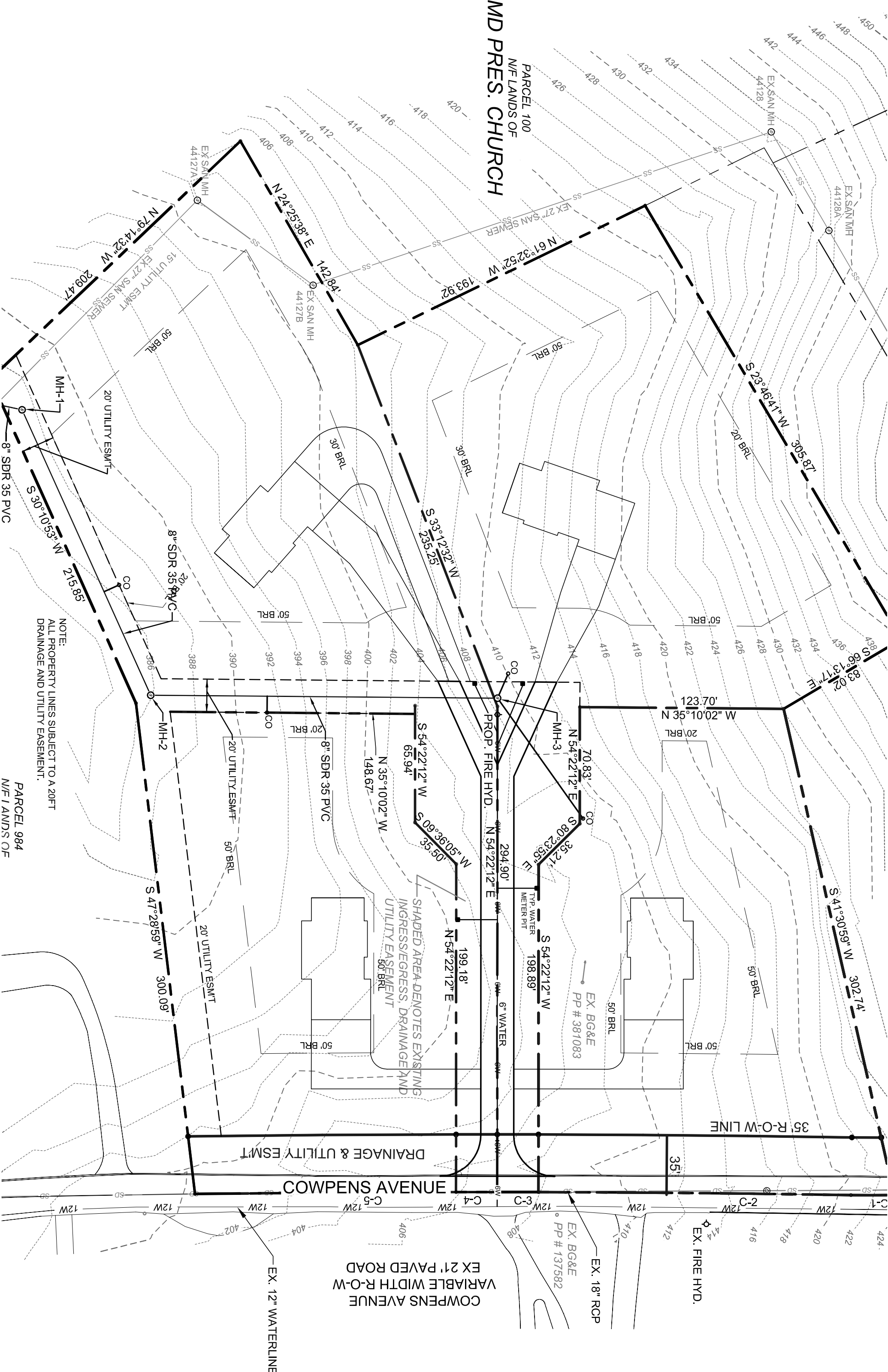
6" WATER

PROP. FIRE HYD.

8" SDR 35 PVC

8" SDR 35 PVC

8" SDR 35 PVC



83.02

61.13

13.17

61.13

13.17

61.13

13.17

61.13

13.17

61.13

13.17

61.13

13.17

61.13

13.17

61.13

13.17

61.13

13.17

61.13

13.17

61.13

13.17

61.13

13.17

61.13

13.17

61.13

13.17

61.13

13.17

61.13

13.17

61.13

13.17

61.13

13.17

61.13

13.17

61.13

13.17

61.13

13.17

61.13

13.17

61.13

13.17

123.70' M 35°10'02" N

20' BRL

70.83' N 54°22'12" E

35.21' S 80°23'55" E

294.90' N 54°22'12" E

198.89' S 54°22'12" W

199.18' N 54°22'12" E

35.50' S 09°36'05" W

65.94' S 54°22'12" W

148.67' N 35°10'02" W

50' BRL

50' BRL

50' BRL

50' BRL

50' BRL

50' BRL

50' BRL

50' BRL

50' BRL

50' BRL

50' BRL

50' BRL

50' BRL

50' BRL

50' BRL

50' BRL

50' BRL

50' BRL

50' BRL

50' BRL

50' BRL

50' BRL

50' BRL